

# DID YOU KNOW...

Are you a Cancer Warrior?



## Most insurance\* plans cover your post-surgical items

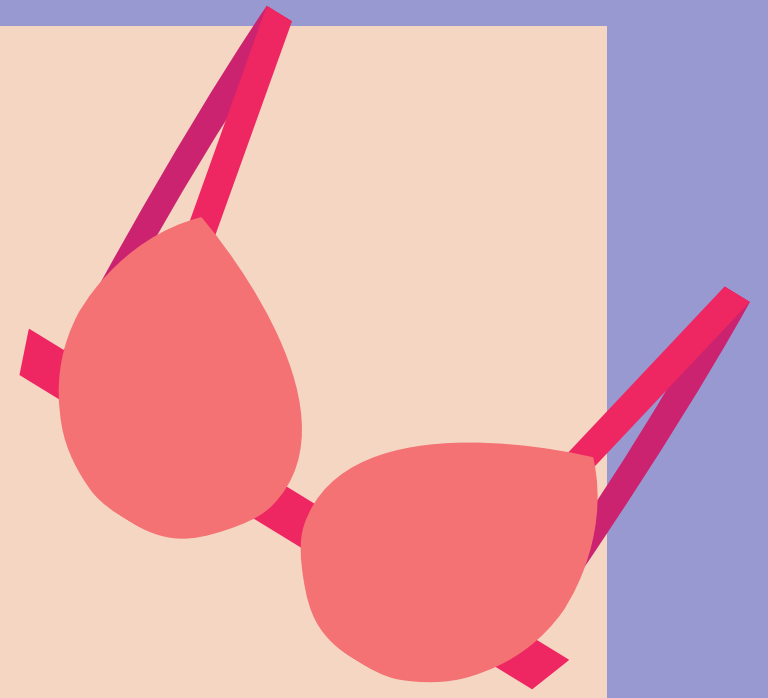


Whether you're recovering from recent surgery or have been managing your condition for a while, this information could be relevant to you.

## Is Your Bra Happy?

### 7 signs that it is time to get a new lift!

- Your straps are loose
- Band feels too tight / loose
- The back is stretched out
- The apex of your cup is not quite filled out
- Color is faded and dull
- Threads are popping out
- Breast tissue is popping out or not filling out the cup of the bra



## Camisoles



If you've been recently diagnosed and are facing surgery soon, consider getting a post-surgical camisole. These garments are designed to manage surgical drains and provide additional support as you recover.

## Breast Prosthesis

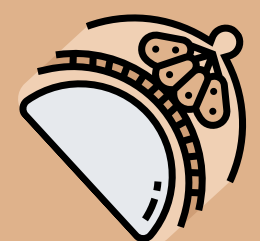
If you're frustrated with using tissues or borrowing a t-shirt to fill your bra, you should know that your insurance can cover the cost of a prosthetic to restore your shape, whether you've had a mastectomy or lumpectomy.



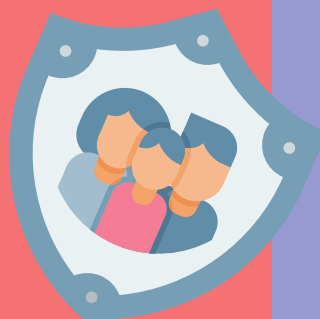
## Reconstruction

Are you considering reconstruction? We're here to support you at every stage.

- Comfortable, supportive bras
- A versatile breast prosthesis:
  - Suitable for use while awaiting surgery
  - Adaptable to accommodate your expansion process
  - Helps maintain a symmetrical breast appearance for discretion throughout your journey



## Did you know that MOST insurance plans cover the following:



- 1 - Breast prosthesis per surgical side (every 2 years)
- 1 - Lightweight prosthesis per surgical side (every 6 Months)
- 2 - Camisoles
- 1 to 12 - Bras (every year)

### **Compression Garments for Lymphedema: Effective January 2024, per the Lymphedema Treatment Act:**

Medicare and other insurance plans will cover medically necessary compression wear.\*

Eligible beneficiaries may receive:

- Three (3) daytime compression garments per limb, every six (6) months.
- Two (2) nighttime compression garments per limb, every two (2) years.

\*Lymphedema diagnosis required for consideration of coverage

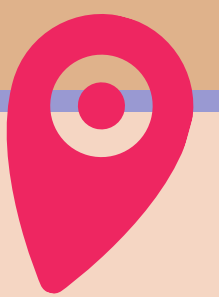
## Alala, LLC

**Charleston:** 9231 Medical Plaza Dr., Suite D, N. Charleston, SC 29406

**Columbia:** 3400 Harden St Ext, Columbia, SC 29203

**Site Visits:** Beaufort, Camden, Greenwood, Hampton, Little River, Murrells Inlet, Okatie, Sumter

803-569-4373 | CSR@alala.info



This information is brought to you by the **Alala Cancer Society**, your local nonprofit dedicated to supporting you with resources and information to assist in your cancer journey.